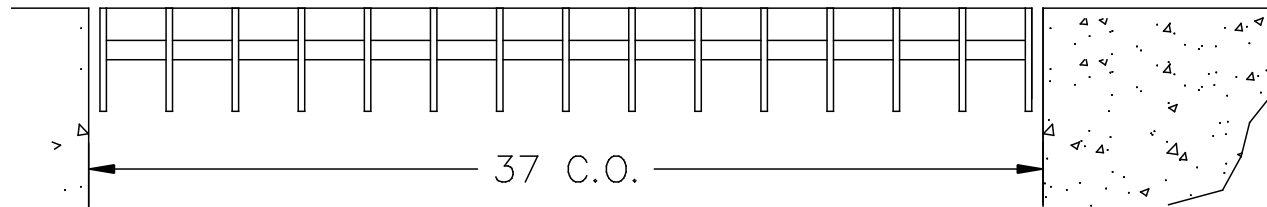
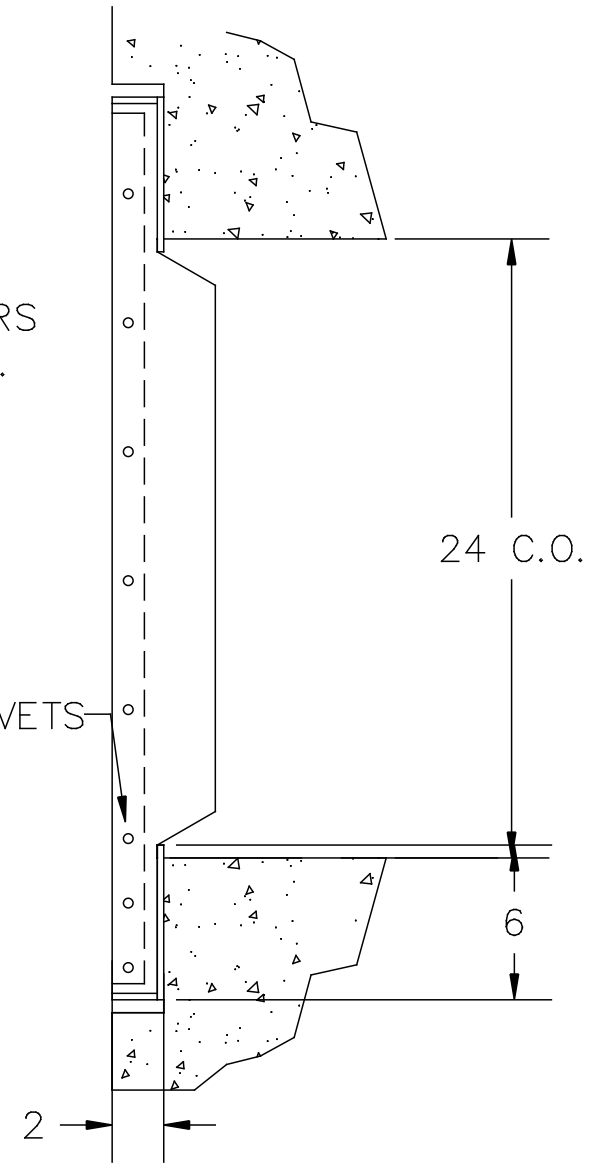


BEARING BARS
1/4 X 4 F.B.

3/8" DIA. RIVETS
@ 5" O.C.



NOTES:

- 1- MATERIAL: STEEL, HOT DIPPED GALVINIZED.
- 2- PAINTED TO F.D.O.T. SPECIFICATIONS UPON REQUEST.
- 3- WEIGHT: 200 LBS. APP.
- 4- LOADING: H-20 WHEEL LOADS.

U.S. FOUNDRY & MFG. CORP.
MEDLEY, FLORIDA

USF 6693 STEEL GRATE

| | | |
|----------|-----------|---------|
| DWN. BY: | SCALE: | DATE: |
| NKD | 1/8" = 1" | 4/15/96 |
| CHK. BY: | DWG. NO: | REV: |
| | 13981 | |