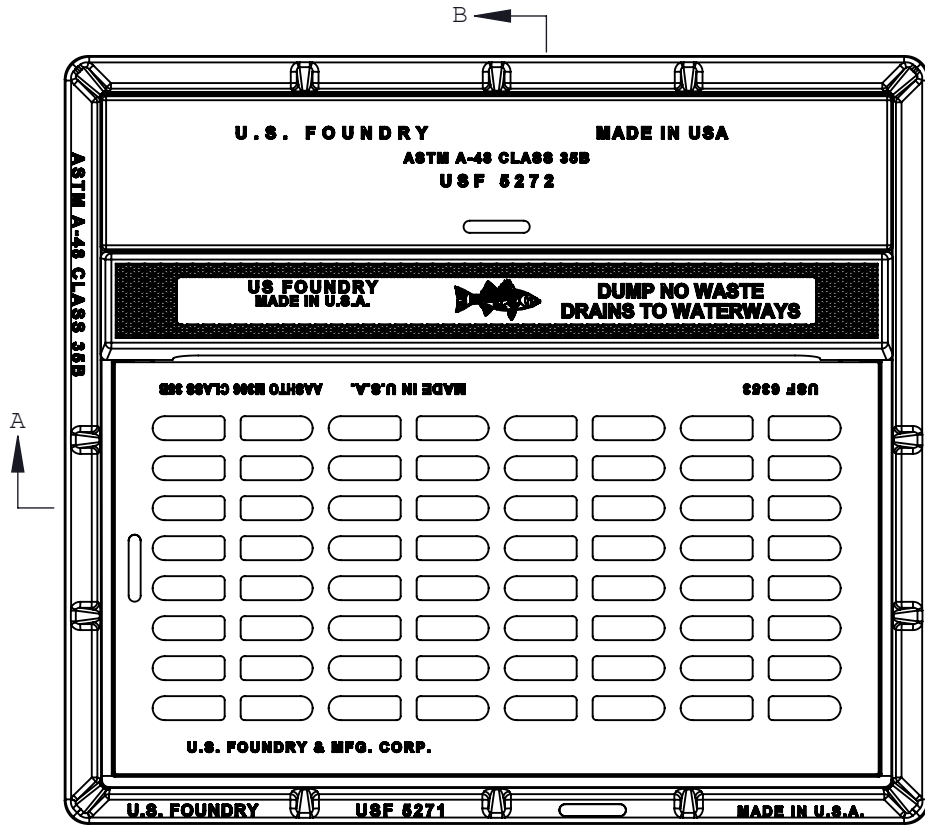
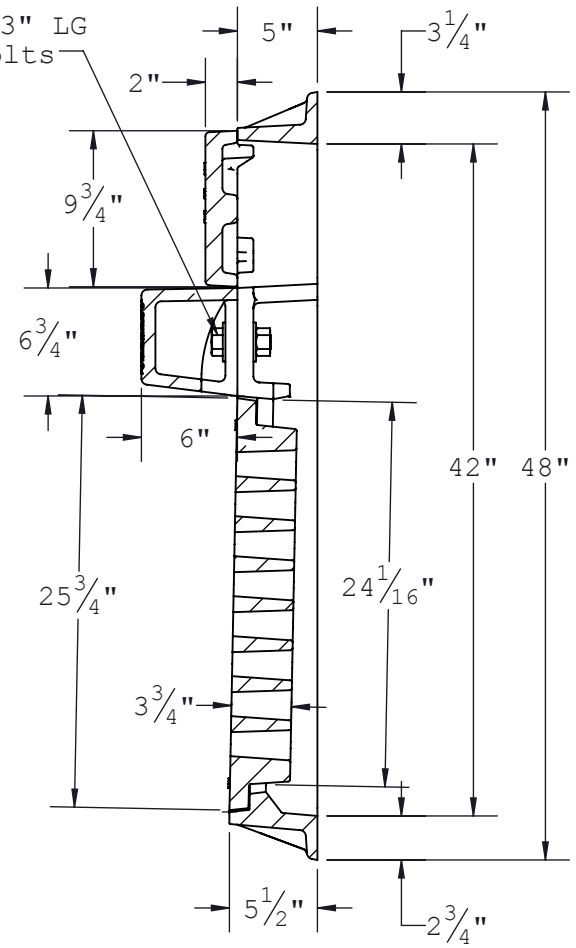


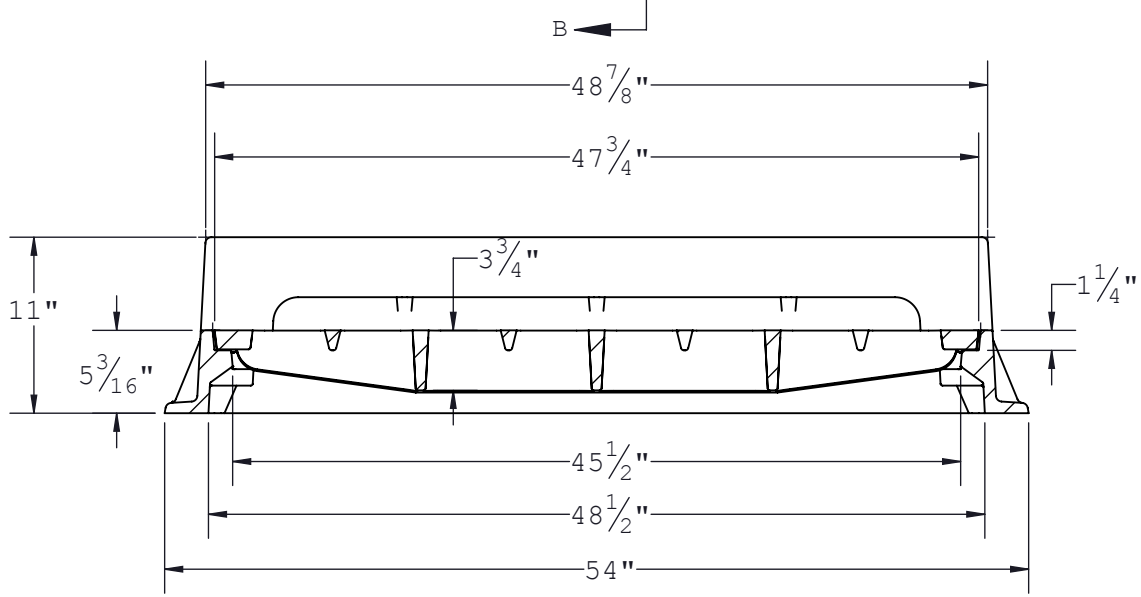
THE INFORMATION CONTAINED IN THIS DRAWING IS THE SOLE PROPERTY OF U.S. FOUNDRY & MANUFACTURING CORP. ANY REPRODUCTION IN PART OR AS A WHOLE WITHOUT THE WRITTEN PERMISSION OF U.S. FOUNDRY & MANUFACTURING CORP. IS PROHIBITED. U.S. FOUNDRY & MANUFACTURING CORP. RESERVES THE RIGHT TO MAKE MODIFICATIONS TO DESIGN WITHOUT PRIOR NOTICE. DRAWING IS UNCONTROLLED WHEN PRINTED. WEIGHTS AND DIMENSIONS ARE PROVIDED FOR REFERENCE ONLY © 2014 US FOUNDRY AN EAGLE MANUFACTURING COMPANY



(2)  $\text{\O}1'' \times 3''$  LG S.S. HH Bolts



SECTION B-B



SECTION A-A

8351 NW 93rd Street  
Medley, FL, 33166-2025  
ph: 1-800-432-9709  
fax: 305-887-9429  
www.usfoundry.com

**US FOUNDRY**  
AN EAGLE MANUFACTURING COMPANY © 2014 All Rights Reserved

**USF 5275 Fr, Hd, BP & 6353 Grate  
5271 Frame, 5273 Hood, 5272 Back Plate**

LOAD CLASSIFICATION: Heavy Duty		FLOW AREA: 415 in <sup>2</sup>
MATERIAL: Gray Cast Iron ASTM-A48 Class 35B		
ITEM:	BAAN #	DRAWING
Fr, Hd, BkPl	8050211	
Grate	8077055	DATE 1/8/2014
Assembly	8050215	DRAWN BY AB
REV 0	DATE	REV BY QUOTE #

Customer Drawing