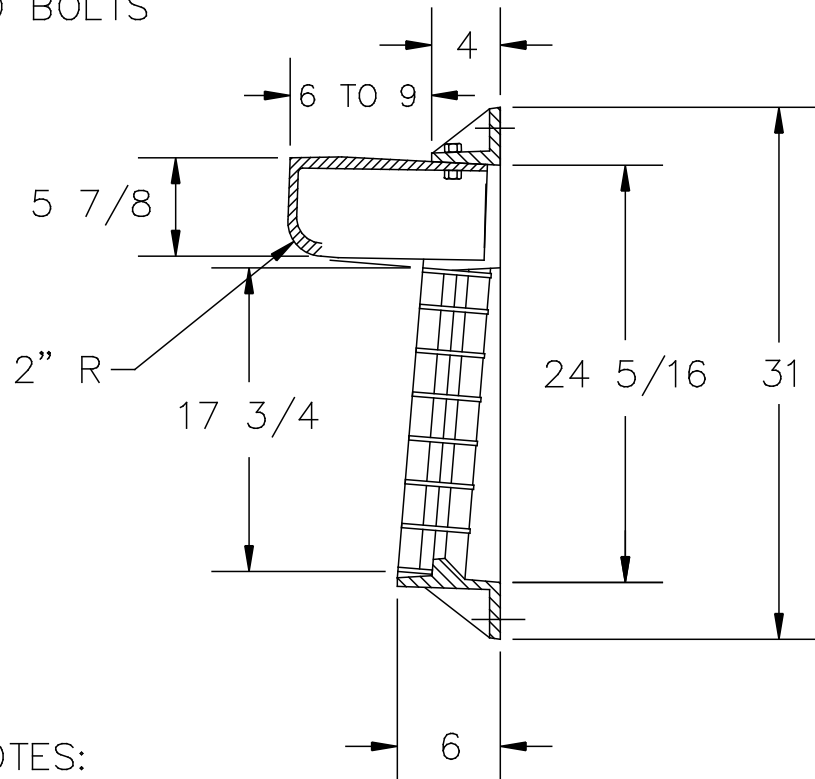


1/2" ϕ X 2 1/2" LG.
GALVANIZED BOLTS

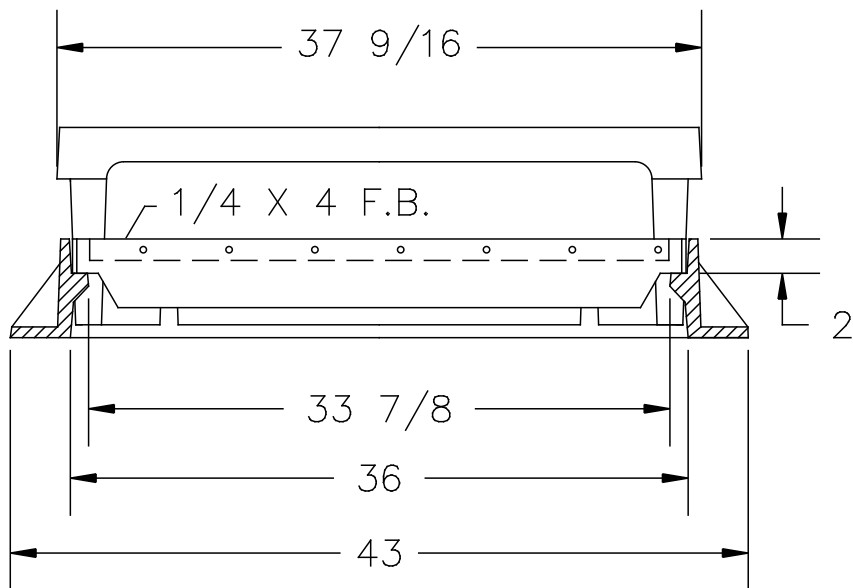
35 3/4 GRATE

4- 7/8" DIA.
ANCHOR HOLES



NOTES:

- 1- FRAME & HOOD: ASTM A48 CLASS 35B GRAY IRON.
- 2- GRATE; STEEL, HOT DIP GALVANIZED AFTER FABRICATION
- 3- FRAME WT: 195 LBS. APP.
- 4- GRATE WT: 100 LBS. APP.
- 5- HOOD WT: 125 LBS. APP.
- 6- LOADING: H-20 TRAFFIC.



U.S. FOUNDRY & MFG. CORP.
MIAMI, FLORIDA

USF 5130 FRAME & 6619
STEEL RETICULINE GRATE

DWN. BY: A.M. | DATE:02/18/92

CHK. BY: | DWG. NO: A2702