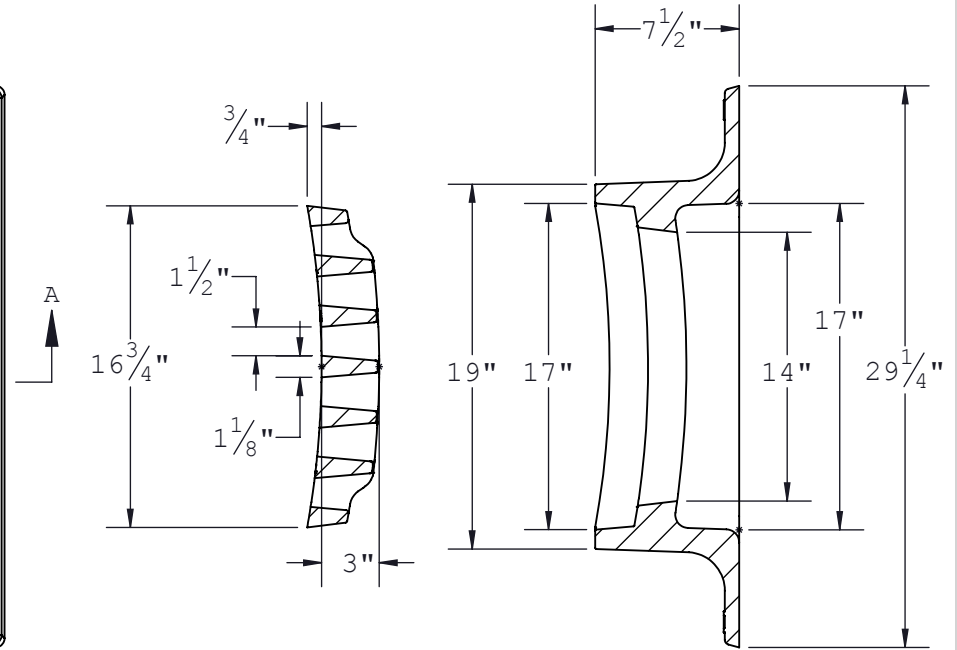
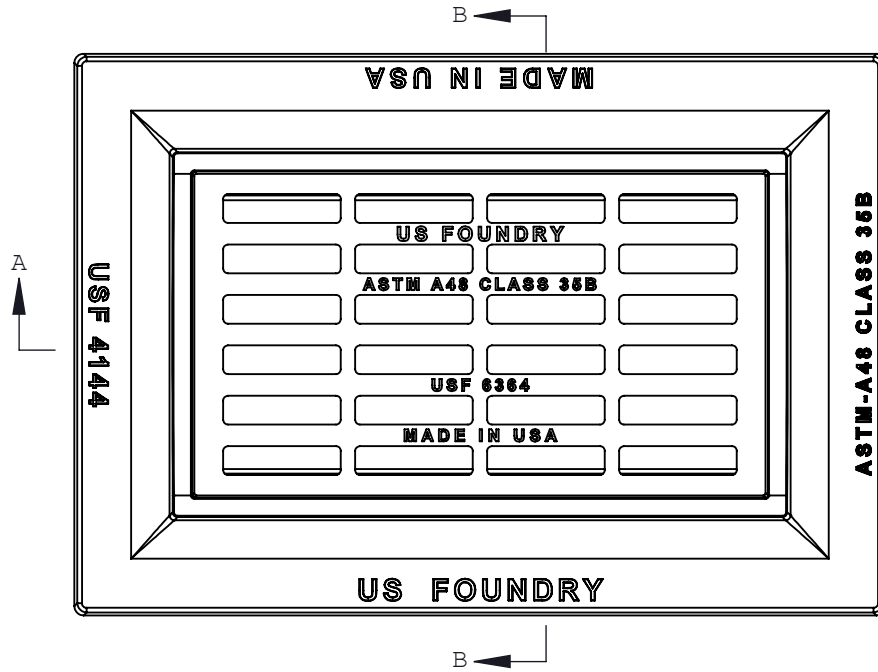
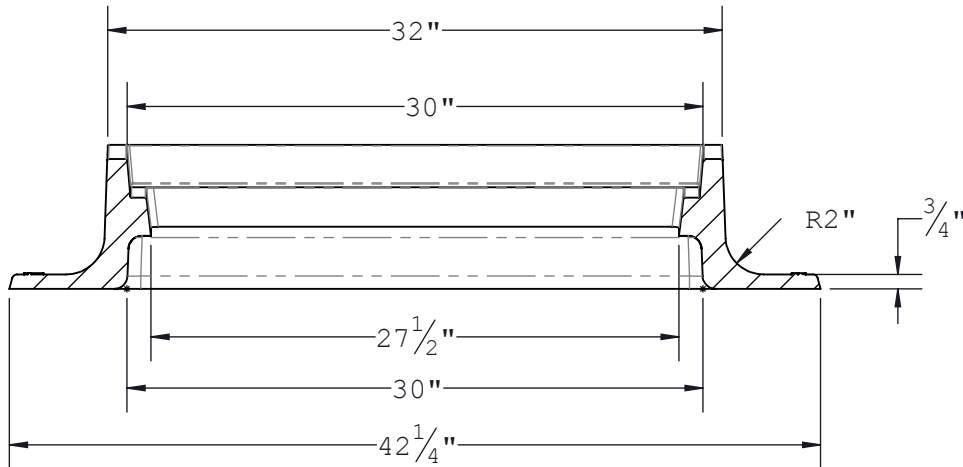
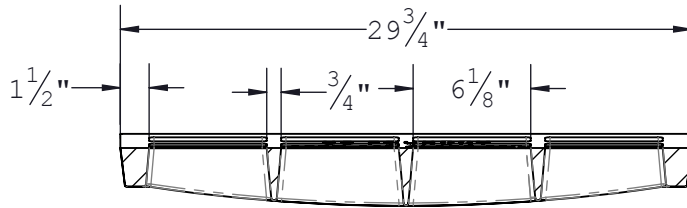


THE INFORMATION CONTAINED IN THIS DRAWING IS THE SOLE PROPERTY OF U.S. FOUNDRY & MANUFACTURING CORP. ANY REPRODUCTION IN PART OR AS A WHOLE WITHOUT THE WRITTEN PERMISSION OF U.S. FOUNDRY & MANUFACTURING CORP. IS PROHIBITED. U.S. FOUNDRY & MANUFACTURING CORP. RESERVES THE RIGHT TO MAKE MODIFICATIONS TO DESIGN WITHOUT PRIOR NOTICE. DRAWING IS UNCONTROLLED WHEN PRINTED. WEIGHTS AND DIMENSIONS ARE PROVIDED FOR REFERENCE ONLY © 2014 US FOUNDRY AN EAGLE MANUFACTURING COMPANY



SECTION B-B



SECTION A-A



**US FOUNDRY**

AN EAGLE MANUFACTURING COMPANY © 2014 All Rights Reserved

8351 NW 93rd Street  
Medley, FL, 33166-2025  
ph: 1-800-432-9709  
fax: 305-887-9429  
www.usfoundry.com

## USF 4144 Frame & 6364 Grate

LOAD CLASSIFICATION: <b>Heavy Duty</b>		FLOW AREA: <b>219 in<sup>2</sup></b>
MATERIAL: <b>Gray Cast Iron AASHTO M306 Class 35B</b>		
ITEM:	BAAN #	DRAWING
Frame	<b>8030550</b>	
Grate	<b>8077094</b>	DATE: <b>5/9/2014</b>
		DRAWN BY: <b>OD/ULS</b>
REV: <b>0</b>	DATE:	REV BY:
		QUOTE #: <b>4101</b>

Customer Drawing